



Features

1. CSB-80 provides maintenance-free operation
2. Operate satisfactorily without lubrication under light duty and low speed
3. CSB-80 has a high PV capability under high temperature
4. Temperature be allowance from $-150^{\circ}\text{C} \sim +250^{\circ}\text{C}$
5. Good chemical resistance
6. High static and dynamic load capacity
7. No water absorption
8. Suitable for rotating, oscillating, reciprocating and sliding movement.

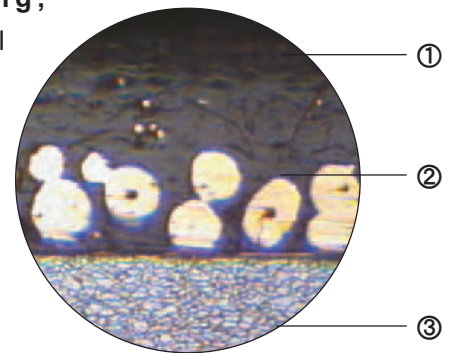
Structure

1. PEEK+PTFE 0.30~0.50mm, gives high wear resistance and low friction even only minute quantities of lubricant are supplied. This bearing surface carries a pattern of circular indents which should be filled with grease on assembly of the bearing.

2. Bronze layer 0.20~0.35mm, provides max. thermal conductivity away from the bearing surface, also serves as a reservoir for the PTFE/PEEK mixture.

3. Steel backing, provides mechanical strength and high load carrying capacity.

4. Copper/Tin plating 0.002mm, provides good corrosion resistance.



Tech. Data

Max. load	Static	250N/mm ²	Friction coefficient	0.03~0.20		
	Very low speed	140N/mm ²		Max. speed	Pre-lubricated	2m/s
	Rotating oscillating	60N/mm ²			Oiling Grease	Continuous
Max. PV	Short-term operation	3.6N/mm ² *m/s	Thermal conductivity	50 W(m*K) ⁻¹		
	Continuous operation	1.8N/mm ² *m/s	Coefficient of thermal expansion	11*10 ⁻⁶ *K ⁻¹		
Temp. limit		-150°C~+250°C				

Typical Applications

CSB-80 bearings application covered gear pump, ABS system, piston pump, gear motor, machine tools, agricultural machinery and so on. The materials is recommended with initial pre-lubrication at assembly.

Available

- Cylindrical Bushes
- Thrust Washers
- Non-standard parts as design

CSB-80 is supplied by customer order, the tolerance is according to CSB-20 standard dimension.